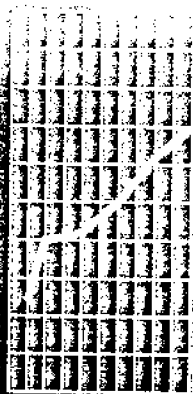




March 1997

EMBARGO: 11:30 AM (CANBERRA TIME) FRI 7 MARCH 1997

Tasmanian Statistical Indicators



Statistics



**TASMANIAN STATISTICAL INDICATORS
MARCH 1997**

**Denis W. Rogers
Regional Director, Tasmania**



CONTENTS

	Page
MAIN FEATURES	v
TABLES	
1 Population	1
2 Births, deaths and marriages registered	1
3 Labour force status	2
4 Labour force status by region, males	3
5 Labour force status by region, females	4
6 Labour force status by region, persons	5
7 Teenage labour market	6
8 All employed persons by occupation	7
9 Employed wage and salary earners, sector and industry	8
10 Average hours worked	8
11 Job vacancies	9
12 Industrial disputes	9
13 Average weekly earnings of employees	10
14 Weekly award rates of pay indexes, full-time adult employees	10
15 Summary of annual movements in wages and prices	11
16 House price index numbers, Hobart	11
17 Consumer price index, Hobart and eight capital cities combined	12
18 Price index of materials used in building other than house building, Hobart	13, 14
19 Production of selected commodities	15
20 Livestock slaughtering: original	16
21 Livestock slaughtering: seasonally adjusted and trend	16
22 Meat production	17
23 Principal mineral concentrates produced	17
24 Sawmills and plywood mills, logs delivered and timber produced	18
25 Chipping and grinding of wood	18
26 Logs delivered for milling or chipping	19
27 Building approvals	20

INQUIRIES

- *for further information about statistics in this publication and the availability of related unpublished statistics, contact the Hobart office of the ABS on (03) 6222 5800.*
 - *for information about other ABS statistics and services, please refer to the back cover of this publication.*
-

	Page
28 Secured housing commitments	20
29 Banking statistics	21
30 Private new capital expenditure by type of asset	21
31 Passenger arrivals and departures, Tasmania	22
32 Total passenger arrivals by air and sea, Tasmania	22
33 Accommodation statistics	23
34 Registrations of new motor vehicles	24
35 Turnover of retail establishments at current prices	24
36 Major Statistical Indicators—Australia and State comparisons	25
 EXPLANATORY NOTES	 26

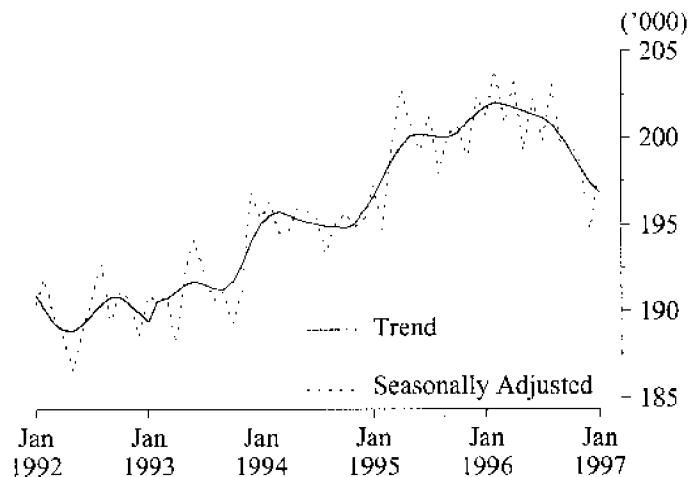
MAIN FEATURES

EMPLOYMENT

State comparisons
trend estimates

The Australian and State *trend series* comparisons are given on page 25. There was a decrease of 2.5% in Tasmania's employment over the year to January 1997. The largest percentage increase in employment was in Western Australia (2.6%). Next followed Queensland and Victoria (1.6%), New South Wales (1.1%), and South Australia (0.3%).

EMPLOYMENT, TASMANIA



Regional comparisons
original terms

In the Hobart and Southern Statistical Divisions the estimate of employment in *original terms* in December 1996 was 103,100 and compares with 102,300 in December 1995. The estimate of employment in the Northern Statistical Division in December 1996 was 55,500 and compares with 59,300 in December 1995. The estimate of employment in the Mersey-Lyell Statistical Division was 40,000 in December 1996, and compares with 44,300 for December 1995.

(See tables 3-8, pages 2-7.)

THE LABOUR FORCE

Trend estimates

There were an estimated 219,700 persons (based on *trend estimates*) in the labour force in January 1997, and an estimated 369,400 civilian Tasmanians aged 15 years or more, yielding a labour force participation rate of 59.5%, compared with 61.0% in January 1996.

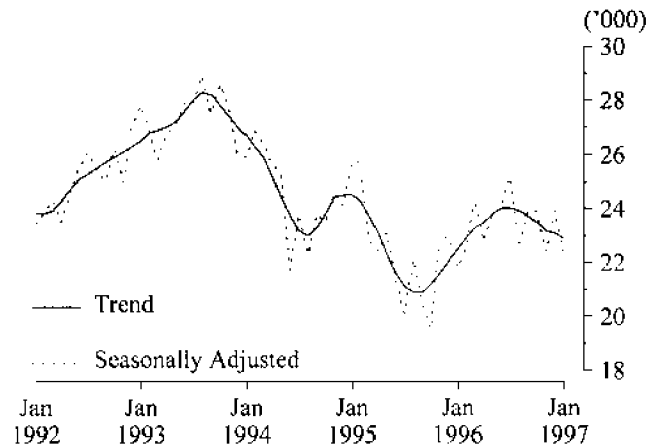
For males, the *trend* estimate of the participation rate was 69.8%, compared with 71.3% for January 1996. For females, the *trend* estimate of the participation rate was 49.5%, compared with 51.0% in January 1996.

(See table 3, page 2.)

UNEMPLOYMENT

Trend estimates The Tasmanian *trend* estimate of the number of unemployed persons in January 1997 was 22,900. This compares with 22,500 for January 1996. The *trend* estimate of the unemployment rate of 10.4% in January 1997 compared with 10.0% in January 1996. (See tables 3-8, pages 2-7.)

UNEMPLOYMENT, TASMANIA



AWARD RATES OF PAY INDEXES

Original terms The movement, from December 1995 to December 1996, of weekly award rates of pay indexes for Tasmania was 0.6% for full-time adult females and 0.7% for full-time adult males, for a combined annual increase of 0.7%. For Australia, the figures were 1.5% for females and 1.1% for males, for a combined annual increase of 1.2%.

For full-time adult female employees in Tasmania, the largest industry increases over this 12 month period occurred in the Public administration and defence industry (2.9%); and the Recreation, personal and other services industry (0.9%).

For the same period for full-time adult male employees in Tasmania, the largest industry increase occurred in the Manufacturing industry (1.5%).

The largest occupation increase over the same period for full-time adult female employees occurred in Clerks (1.0%); and Para-professionals (0.9%).

For full-time adult male employees the largest occupation increases over the period occurred in Clerks (1.2%); and Plant and machine operators, and drivers (1.1%).

Source: *Award Rates of Pay Indexes, Australia*, ABS catalogue no. 6312.0.

CONSUMER PRICE INDEX

Original terms The Consumer Price Index: all groups index for Hobart rose by 0.2 % in the December quarter of 1996, and by 1.8 % for the year ending December. This compared with an increase of 0.2% for the weighted average of the eight capital cities for the December quarter, and 1.5% for the year.

The largest increases in the index for the year ending December were recorded in Darwin (2.1%), and Brisbane (1.9%). The smallest increases were recorded in Melbourne, Adelaide and Canberra (1.2%).

Major contributors to the annual increase at the national level were petrol prices (up 3.1%), hospital and medical services (up 5.0%), cigarettes and tobacco (up 4.4%), and fresh fruit (up 16.8%), with falls being recorded in mortgage interest charges (down 7.8%), local government rates and charges (down 3.6%) and prices of motor vehicles (down 2.7%).

(See tables 15 and 17, pages 11 and 12.)

BUILDING MATERIALS PRICE INDEXES

Original terms The price index of materials used in house building in Hobart decreased by 0.5% over the twelve months ending December 1996. This compares with the national average, which increased by 0.3% over the same period. Sydney, Adelaide and Perth all recorded increases over the period, with Adelaide being the highest, at 2.1%.

For materials used in building other than house building, the Hobart price index recorded an increase of 1.0 % over the twelve months ending December 1996. Other state capitals that recorded increases in the index were Brisbane, Adelaide and Perth, with Adelaide being the highest at 1.7%. The index for the weighted average of the eight capital cities increased by 0.1% over the period.

Components which contributed most to the change in Hobart's materials other than house building price index over the year ending December 1996 were paint and other coatings (up 5.6%), fabricated steel products (up 4.7%) and structural steel (up 3.9%). These rises were partly offset by falls in the prices of structural timber (down 9.3 %) and non-ferrous pipes and fittings (down 4.0%).

(See tables 15 and 18, pages 11 and 13.)

LIVESTOCK SLAUGHTERING

Trend estimates The December 1996 Tasmanian *trend* estimate for the slaughtering of cattle and calves was 2.8% higher than that recorded in the previous month. The number of sheep and lambs slaughtered increased by 4.0%, and the number of pigs slaughtered decreased by 3.0% over the same period.

The *trend* estimate of the number of cattle and calves slaughtered in December 1996 was 22,100 which was 12.2% above the number slaughtered in December 1995.

The *trend* estimate for the slaughtering of sheep and lambs was 63,400 in December 1996, which was 9.9% below the number slaughtered in December 1995. This was the third successive monthly increase in the number of sheep and lambs slaughtered in Tasmania, but well below the *trend* estimate of 88,700 slaughtered in December 1994.

The *trend* estimate of 5,400 pigs slaughtered in December 1996 was 21.6% below the number slaughtered in December 1995, and 28.8% below the number slaughtered in December 1994.
(See table 21, page 16.)

BUILDING APPROVALS

Original terms There were 153 new dwelling units approved during December 1996 in Tasmania. This was a decrease of 8.9% on the 168 recorded for November 1996 and a 30.1% decrease on the number recorded for December 1995 (219).

For the twelve months ended December 1996 there were 2,168 new dwelling units approved, 21.4% below the 2,757 units recorded for the twelve months ended December 1995.

The value of new residential building approved, at current prices, in December 1996 was \$12.9 million, 3.7% below the November 1996 figure of \$13.4 million, and 31.4% below the December 1995 figure of \$18.8 million.

The value of non-residential building approved, at current prices, in December 1996 was \$4.4 million, 39.7% below the November 1996 figure of \$7.3 million and 67.6% below the December 1995 figure of \$13.6 million.

(See table 27, page 20.)

HOUSING FINANCE

Trend estimates The *trend* estimate, for the number of new secured housing finance commitments entered into in Tasmania in December 1996 was 961 dwellings, a decrease of 4.6% on the previous months figure of 1,007. The value of these new commitments was \$65.7 million down 4.2% on the November value of \$68.6 million.

During the twelve months ended December 1996 the *trend* estimate for the number of Tasmanian secured housing commitments rose 0.4% from 957 to 961. The value of these commitments at December 1995 was \$65.7 million. This value fluctuated during the year, between a low of \$59.4 million in April, and a high of \$71.4 million in September. It returned to \$65.7 million in December 1996. Nationally the total number of Australian dwelling commitments increased 4.3% from 38,523 to 40,190 dwellings, and the value increased 11.3% from \$3,717.8 million to \$4,136.5 million.

(See table 28, page 20.)

NEW MOTOR VEHICLE REGISTRATIONS

Original terms There were 1,735 new motor vehicles (excluding motorcycles) registered in Tasmania during December 1996. This was 36.9% higher than the 1,267 registered in November 1996 but virtually the same as the figure for December 1995 (1,734).

Of the new motor vehicles (excluding motorcycles) registered in December 1996 in Tasmania, 823 were vehicles registered by vehicle rental businesses compared with 370 registered by vehicle rental businesses in November 1996 and 842 in December 1995.

(See table 34, page 24.)

RETAIL

- Original terms In *original* terms, the estimate of retail turnover in Australia during December 1996 was \$13,199.3 million, 0.1% below the \$13,218.6 million recorded in December 1995.
- In *original* terms, the estimate of retail turnover in December 1996, for Tasmania, was \$324.3 million, 1.2% above the figure recorded for December 1995 (\$320.5 million).
- Trend estimates The *trend* estimate of retail turnover in Australia during December 1996, was \$10,143.5 million, 0.9% higher than for December 1995 (\$10,054.8 million).
- The *trend* estimate of retail turnover in Tasmania recorded for December 1996, was \$247.3 million, an increase of 1.9% on the December 1995 figure of \$242.6 million.
- The monthly *trend* estimate for turnover of retail and selected service establishments for Tasmania has shown an increase for the last four months.
- (See table 35, page 24.)



1

POPULATION: Original

Year or quarter	Estimated resident population at end of period	Natural increase ¹	Net estimated migration gain	Total population growth	Annual growth rate ²
	'000	'000	'000	'000	%
Year ended 30 June					
1992	469.7	3.2	- 0.3	2.9	0.62
1993	471.4	3.1	- 1.5	1.7	0.35
1994	472.5	3.1	- 2.0	1.1	0.24
1995	473.0	2.9	- 2.4	0.5	0.11
1996	473.4	2.6	- 2.2	0.4	0.08
Quarter					
1995					
March	473.0	0.8	- 0.6	0.2	0.17
June	473.0	0.7	0.7	0.0	0.11
September p	473.2	0.7	- 0.5	0.2	0.09
December p	473.2	0.5	- 0.6	- 0.1	0.07
1996					
March p	473.2	0.8	- 0.7	0.1	0.04
June p	473.4	0.6	- 0.4	0.1	0.08

¹ Excess of live births registered over deaths registered (based on usual State of residence).

² Percentage growth from same quarter in previous year.

(Source: Australian Demographic Statistics, ABS catalogue number 3101.0)

2

BIRTHS, DEATHS AND MARRIAGES REGISTERED: Original

Year or quarter	Births		Deaths		Infant mortality ¹		Marriages	
	No.	Rate ²	No.	Rate ²	Deaths	Rate ³	No.	Rate ²
Year ended 31 December								
1991	6 857	14.7	3 664	7.9	61	8.9	3 069	6.6
1992	6 956	14.8	3 722	7.9	43	6.2	3 081	6.6
1993	6 804	14.4	3 618	7.7	37	5.4	3 055	6.5
1994	6 836	14.5	3 909	8.3	46	6.7	2 887	6.1
1995	6 558	13.9	3 739	7.9	36	5.5	2 840	6.0
Quarter								
1995								
March	1 804	..	897	..	8	4.4	1 067	..
June	1 611	..	954	..	10	6.2	667	..
September	1 697	..	982	..	9	5.3	307	..
December	1 446	..	906	..	9	6.2	799	..
1996								
March p	1 748	..	979	..	10	5.7	857	..
June p	1 524	..	969	..	6	3.9	789	..

¹ Registered deaths of children under one year of age.

² Rate per 1,000 of estimated mean population.

³ Rate per 1,000 live births.

(Source: Australian Demographic Statistics, ABS catalogue number 3101.0)

3

LABOUR FORCE STATUS¹: Seasonally adjusted and trend

Month	Seasonally adjusted series				Trend Series			
	Employed	Unemployed	Unemployment rate	Participation rate	Employed	Unemployed	Unemployment rate	Participation rate
	'000	'000	%	%	'000	'000	%	%
MALES								
1996								
January	114.7	14.0	10.9	71.1	114.9	14.1	11.0	71.3
February	117.0	14.0	10.7	72.4	115.4	14.5	11.2	71.8
March	115.5	15.0	11.5	72.1	115.7	14.9	11.4	72.1
April	116.3	15.3	11.6	72.6	115.8	15.1	11.5	72.3
May	114.5	15.0	11.6	71.5	115.9	15.1	11.6	72.3
June	116.2	15.2	11.6	72.5	115.9	15.1	11.5	72.3
July	114.9	15.5	11.9	71.9	115.8	14.8	11.3	72.1
August	117.5	13.7	10.5	72.4	115.7	14.5	11.1	71.8
September	115.6	14.4	11.1	71.7	115.4	14.2	10.9	71.4
October	114.1	13.9	10.9	70.6	114.8	14.0	10.8	71.0
November	114.6	12.7	10.0	70.1	114.2	13.8	10.8	70.5
December	112.6	15.1	11.8	70.3	113.6	13.7	10.8	70.1
1997								
January	113.3	13.3	10.5	69.7	113.1	13.7	10.8	69.8
FEMALES								
1996								
January	86.5	7.8	8.2	50.4	87.0	8.4	8.8	51.0
February	86.9	8.4	8.9	50.9	86.6	8.4	8.8	50.7
March	85.3	9.1	9.7	50.4	86.2	8.4	8.9	50.5
April	87.0	7.6	8.0	50.5	85.9	8.5	9.0	50.4
May	84.6	8.7	9.3	49.8	85.6	8.7	9.2	50.4
June	86.0	8.9	9.3	50.6	85.5	8.9	9.5	50.4
July	85.0	9.7	10.3	50.5	85.3	9.2	9.7	50.4
August	85.5	9.0	9.5	50.4	85.0	9.4	9.9	50.3
September	83.8	9.4	10.1	49.7	84.7	9.5	10.1	50.2
October	85.5	10.0	10.5	50.9	84.3	9.5	10.1	50.0
November	83.9	9.7	10.4	49.9	84.0	9.4	10.1	49.8
December	82.1	8.8	9.7	48.4	83.8	9.4	10.0	49.6
1997								
January	84.9	9.1	9.7	50.1	83.7	9.2	9.9	49.5
TOTAL								
1996								
January	201.2	21.8	9.8	60.6	201.8	22.5	10.0	61.0
February	203.9	22.5	9.9	61.5	202.0	22.9	10.2	61.1
March	200.8	24.2	10.7	61.1	201.9	23.3	10.3	61.1
April	203.2	22.9	10.1	61.4	201.7	23.5	10.5	61.2
May	199.2	23.7	10.6	60.5	201.5	23.8	10.6	61.2
June	202.2	24.1	10.6	61.4	201.3	24.0	10.6	61.2
July	199.8	25.2	11.2	61.1	201.1	24.0	10.7	61.1
August	203.0	22.7	10.0	61.2	200.7	23.9	10.6	60.9
September	199.5	23.9	10.7	60.5	200.0	23.7	10.6	60.6
October	199.6	23.9	10.7	60.6	199.1	23.5	10.5	60.3
November	198.5	22.4	10.1	59.8	198.2	23.2	10.5	60.0
December	194.7	23.9	10.9	59.2	197.4	23.1	10.5	59.7
1997								
January	198.2	22.4	10.2	59.7	196.8	22.9	10.4	59.5

¹ For explanation of terms and concepts, refer to *Labour Force, Australia*. ABS catalogue number 6203.0. (Source: *Labour Force Australia*, ABS catalogue number 6203.0)

4

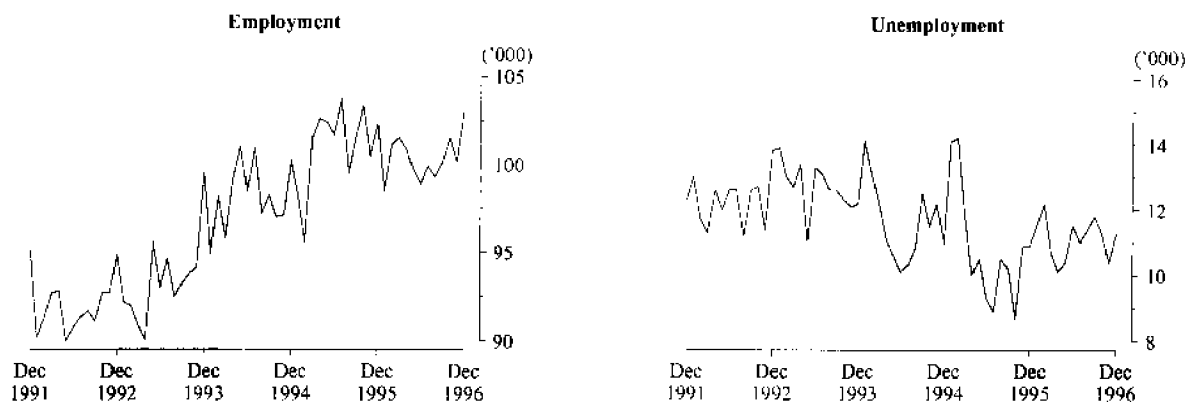
LABOUR FORCE STATUS BY REGION, MALES^{1, 2}: Original

Month		Total employed	Total unemployed	Unemployment rate	Participation rate
		'000	'000	%	%
HOBART AND SOUTHERN STATISTICAL DIVISIONS					
1993	December	54.9	7.9	12.6	71.7
1995	December	56.3	7.1	11.2	71.3
1996	October	56.5	5.9	9.5	70.2
	November	55.6	6.3	10.2	69.6
	December	57.0	7.0	10.9	71.3
NORTHERN STATISTICAL DIVISION					
1993	December	34.5	5.1	12.8	77.5
1995	December	33.5	4.6	12.0	74.7
1996	October	32.4	4.6	12.4	71.6
	November	33.3	3.5	9.4	71.9
	December	32.6	4.7	12.6	73.3
MERSEY-LYELL STATISTICAL DIVISION					
1993	December	25.2	4.3	14.6	72.1
1995	December	26.0	3.5	11.9	72.2
1996	October	24.8	3.1	11.2	68.2
	November	24.8	3.3	11.8	67.9
	December	25.0	3.9	13.6	70.6
TASMANIA					
1993	December	114.6	17.3	13.1	73.4
1995	December	115.8	15.2	11.6	72.4
1996	October	113.7	13.7	10.7	70.2
	November	113.7	13.1	10.3	69.9
	December	114.6	15.6	12.0	71.7

¹ For explanation of terms and concepts, refer to *Labour Force, Australia*, ABS catalogue number 6203.0.

² Data in this table are original series, i.e. they are not part of a seasonally adjusted or a trend series. Accordingly, care should be exercised when using these data. New monthly data from each quarter (March, June, September and December) are published two months after the quarter. (Source: Labour Force Estimates—microfiche tables.)

Hobart and Southern Statistical Divisions—Persons: Original



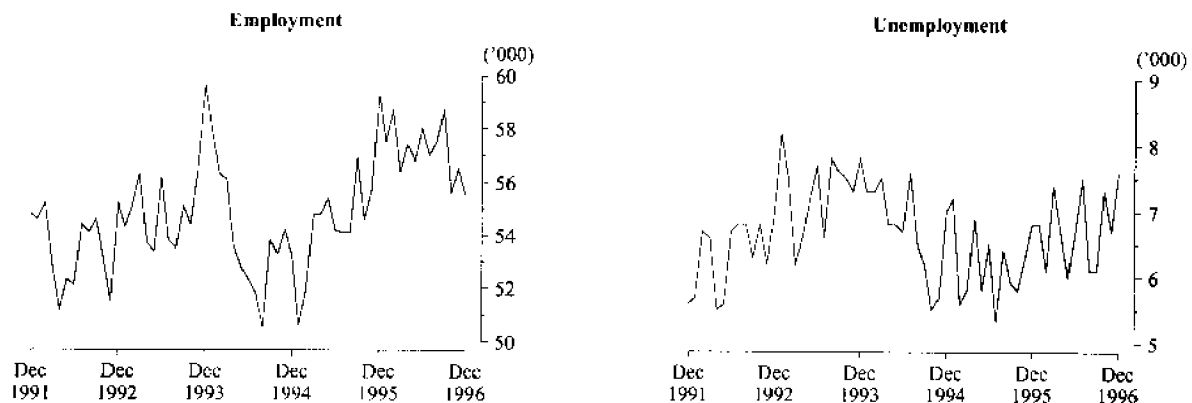
5

LABOUR FORCE STATUS BY REGION, FEMALES^{1, 2}: Original

Month		Total employed '000	Total unemployed '000	Unemployment rate %	Participation rate %
HOBART AND SOUTHERN STATISTICAL DIVISIONS					
1993	December	44.8	4.2	8.6	52.9
1995	December	46.1	3.8	7.7	53.4
1996	October	45.0	5.4	10.7	53.6
	November	44.6	4.1	8.5	52.0
	December	46.1	4.4	8.7	53.6
NORTHERN STATISTICAL DIVISION					
1993	December	25.2	2.7	9.7	52.2
1995	December	25.7	2.2	7.9	53.6
1996	October	23.2	2.7	10.4	49.4
	November	23.2	3.2	12.1	49.7
	December	22.8	2.9	11.2	48.1
MERSEY-LYELL STATISTICAL DIVISION					
1993	December	15.5	3.2	17.0	46.7
1995	December	18.4	2.8	13.2	51.0
1996	October	17.0	1.8	9.5	45.4
	November	16.7	1.7	9.4	45.4
	December	15.1	2.3	13.1	43.2
TASMANIA					
1993	December	85.4	10.1	10.6	51.4
1995	December	90.2	8.8	8.9	52.9
1996	October	85.2	9.8	10.4	50.6
	November	84.5	9.1	9.7	49.9
	December	84.0	9.5	10.2	49.8

¹ For explanation of terms and concepts, refer to *Labour Force, Australia*, ABS catalogue number 6203.0.
² Data in this table are original series, i.e. they are not part of a seasonally adjusted or a trend series. Accordingly, care should be exercised when using these data. New monthly data from each quarter (March, June, September and December) are published two months after the quarter.
(Sources: Labour Force Estimates—microfiche tables.)

Northern Statistical Division—Persons: Original



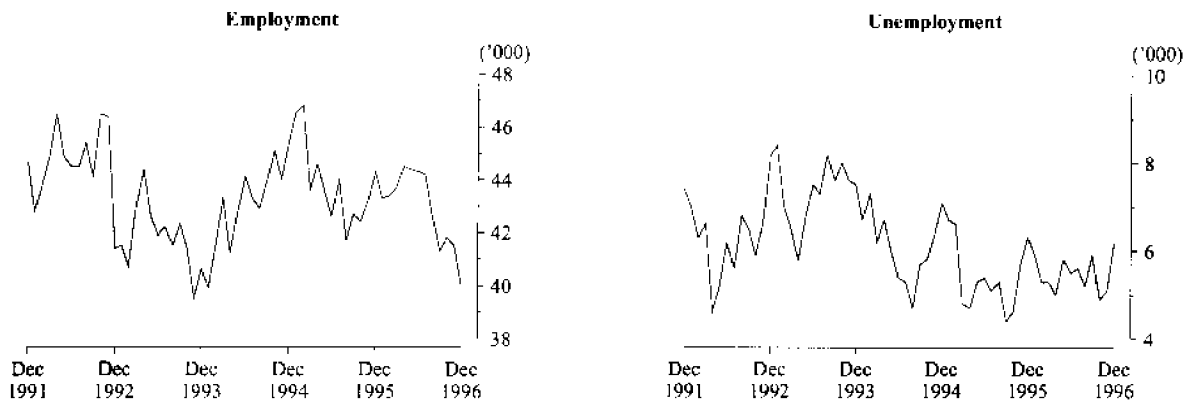
6

LABOUR FORCE STATUS BY REGION, PERSONS^{1, 2}: **Original**

Month		Total employed	Total unemployed	Unemployment rate	Participation rate
		'000	'000	%	%
HOBART AND SOUTHERN STATISTICAL DIVISIONS					
1993	December	99.6	12.2	10.9	62.1
1995	December	102.3	10.9	9.7	62.1
1996	October	101.5	11.3	10.0	61.7
	November	100.2	10.4	9.4	60.5
	December	103.1	11.3	9.9	62.2
NORTHERN STATISTICAL DIVISION					
1993	December	59.7	7.8	11.5	64.6
1995	December	59.3	6.8	10.3	64.0
1996	October	55.6	7.3	11.6	60.5
	November	56.5	6.7	10.5	60.6
	December	55.5	7.6	12.1	60.4
MERSEY-LYELL STATISTICAL DIVISION					
1993	December	40.6	7.5	15.5	59.5
1995	December	44.3	6.3	12.5	61.5
1996	October	41.8	4.9	10.5	56.7
	November	41.5	5.1	10.9	56.8
	December	40.0	6.2	13.4	57.0
TASMANIA					
1993	December	200.0	27.4	12.1	62.2
1995	December	205.9	24.1	10.5	62.5
1996	October	198.8	23.5	10.6	60.2
	November	198.3	22.2	10.1	59.7
	December	198.6	25.1	11.2	60.6

¹ For explanation of terms and concepts, refer to *Labour Force, Australia*, ABS catalogue number 6203.0.

² Data in this table are original series, i.e. they are not part of a seasonally adjusted or a trend series. Accordingly, care should be exercised when using these data. New monthly data from each quarter (March, June, September and December) are published two months after the quarter. (Source: Labour Force Estimates—microfiche tables.)

Mersey-Lyell Statistical Division—Persons: **Original**

7

TEENAGE LABOUR MARKET^{1, 2}: Original

Month	Employed		Unemployed		Labour force	Not in labour force	Civilian population aged 15-19	Unemployment rate	Unemployment population ratio	Participation rate	
	Full-time	Total	Looking for full-time work	Total							
	'000	'000	'000	'000							
ATTENDING NEITHER SCHOOL NOR A TERTIARY INSTITUTION FULL TIME											
1994	January	6.8	9.9	4.8	4.9	14.9	2.4	17.3	33.2	28.3	86.0
1996	January	6.6	10.0	4.2	4.3	14.3	2.1	16.4	30.3	26.2	87.3
1996	November	6.8	9.0	2.1	2.3	11.4	1.5	12.9	20.6	18.2	88.5
	December	6.7	9.9	2.9	3.6	13.5	2.3	15.7	26.7	22.8	85.6
1997	January	6.7	9.5	3.0	3.0	12.5	2.3	14.7	23.8	20.4	84.7
ATTENDING SCHOOL OR A TERTIARY INSTITUTION FULL TIME											
1994	January	0.5	5.2	0.8	1.6	6.8	10.4	17.1	23.5	9.4	39.8
1996	January	0.7	6.7	0.4	1.7	8.4	9.3	17.7	20.2	9.6	47.5
1996	November	0.1	5.0	0.4	1.4	6.4	14.9	21.4	21.6	6.5	30.0
	December	0.4	5.7	0.9	2.7	8.5	10.2	18.5	32.1	14.6	45.5
1997	January	0.7	5.6	1.1	2.9	8.5	11.1	19.5	34.3	14.8	43.3
TOTAL											
1994	January	7.3	15.2	5.6	6.5	21.7	12.8	34.4	30.1	18.9	62.9
1996	January	7.2	16.6	4.6	6.0	22.7	11.3	34.0	26.7	17.6	66.6
1996	November	6.9	14.1	2.5	3.7	17.8	16.4	34.2	21.0	10.9	52.0
	December	7.1	15.6	3.8	6.3	21.9	12.4	34.2	28.8	18.4	63.9
1997	January	7.4	15.1	4.0	5.9	20.9	13.3	34.2	28.0	17.3	61.1

¹ Persons aged 15-19 years.

² For explanation of terms and concepts, refer to *Labour Force, Australia*, ABS catalogue number 6203.0.

(Source: Labour Force Estimates—microfiche tables.)

ALL EMPLOYED PERSONS BY OCCUPATION¹: Original

Occupation	May 1995	May 1996		Proportion of total employed		
	Persons	Males	Females	Persons	May 1995	May 1996
	'000	'000	'000	'000	%	%
Managers and administrators	19.0	13.6	3.4	17.0	9.4	8.5
Farmers and farm managers	6.5	4.0	0.9	4.9	3.2	2.4
Managing supervisors	6.9	6.5	1.5	8.0	3.4	4.0
Other	5.6	3.1	1.2	4.1	2.8	2.0
Professionals	25.1	12.8	10.7	23.5	12.5	11.7
Building and professional engineers	2.4	1.6	—	1.6	1.2	0.8
Health diagnosis and treatment practitioners	3.0	1.3	1.5	2.8	1.5	1.4
School teachers	8.5	1.4	3.7	5.1	4.2	2.5
Business professionals	3.7	3.8	1.4	5.2	1.9	2.6
Other	7.4	4.7	4.1	8.8	3.7	4.4
Para-professionals	14.3	7.3	5.8	13.1	7.1	6.5
Engineering and building associates and technicians	1.6	1.7	0.1	1.8	0.8	0.9
Registered nurses	5.7	0.4	4.0	4.5	2.8	2.2
Other	7.0	5.2	1.7	6.8	3.5	3.4
Tradespersons	29.1	26.3	3.4	29.7	14.4	14.8
Metal fitting and machining tradespersons	2.8	2.4	—	2.4	1.4	1.2
Electrical and electronics tradespersons	4.0	4.5	0.1	4.6	2.0	2.3
Building tradespersons	6.4	6.9	0.1	7.0	3.2	3.5
Other	15.9	12.4	3.2	15.7	7.9	7.8
Clerks	33.0	8.8	26.1	34.9	16.4	17.4
Stenographers and typists	3.8	0.1	3.3	3.4	1.9	1.7
Receptionists, telephonists and messengers	5.0	1.2	4.6	5.7	2.5	2.8
Other	24.2	7.5	18.2	25.8	12.0	12.8
Salespersons and personal service workers	34.2	9.7	23.0	32.7	17.0	16.3
Sales representatives	2.9	2.0	1.3	3.3	1.4	1.6
Sales assistants	15.3	4.0	10.5	14.5	7.6	7.2
Other	16.0	3.7	11.2	14.9	7.9	7.4
Plant and machine operators, and drivers	16.2	15.1	2.1	17.2	8.0	8.6
Road and rail transport drivers	6.9	6.1	0.6	6.6	3.4	3.3
Machine operators	4.4	3.3	1.5	4.8	2.2	2.4
Other	4.9	5.7	—	5.8	2.4	2.9
Labourers and related workers	30.6	21.2	11.6	32.8	15.2	16.3
Trades assistants and factory hands	5.4	3.7	1.4	5.1	2.7	2.5
Agricultural labourers and related workers	7.0	5.8	2.2	8.1	3.5	4.0
Cleaners	6.4	1.3	4.6	5.9	3.2	2.9
Construction and mining labourers	2.0	2.9	0.1	3.0	1.0	1.5
Other	9.8	7.5	3.3	10.7	4.9	5.3
Total employed	201.4	115.0	86.0	200.9	100.0	100.0

¹ For explanation of terms and concepts, refer to *Labour Force, Australia*, ABS catalogue number 6203.0.
(Source: Labour Force Estimates—unpublished data.)

9

EMPLOYED WAGE AND SALARY EARNERS, SECTOR AND INDUSTRY¹: Original

Industry	Employees, February 1995					Percentage distribution	
	Private	Public	Private and public			February 1993	February 1995
	No. ('000)	No. ('000)	Males	Females	Persons		
Agriculture, forestry, fishing and hunting	n.a.	0.7	n.a.	n.a.	n.a.	n.a.	n.a.
Mining	1.5	—	1.4	0.1	1.5	1.7	1.1
Manufacturing	20.3	0.1	15.4	4.9	20.4	14.8	15.2
Electricity, gas and water, construction	6.0	2.7	7.6	1.0	8.7	6.8	6.5
Wholesale and retail trade	26.0	—	15.0	11.0	26.1	20.8	19.4
Transport and storage	3.6	1.5	4.1	1.1	5.2	4.1	3.9
Communication	—	2.3	1.8	0.6	2.3	1.6	1.7
Finance, property and business services	10.1	0.9	4.9	6.0	10.9	9.3	8.1
Public administration and defence	—	10.5	6.5	4.0	10.5	7.0	7.8
Community services	14.0	23.4	11.9	25.5	37.4	24.9	27.8
Recreation, personal and other services	10.2	0.6	4.1	6.7	10.8	8.4	8.0
Total all industries	91.8	42.6	73.2	61.2	134.4	100.0	100.0

¹ For explanation of terms and concepts, refer to *Employed Wage and Salary Earners, Australia*, catalogue number 6248.0. (Source: *Employed Wage and Salary Earners*, ABS catalogue number 6248.0.)

10

AVERAGE HOURS WORKED: Original

Month	Average weekly total hours worked, all employed persons ¹			Average weekly overtime hours ²		Percentage of employees working overtime ²
	Males	Females	Persons	Per employee	Per employee working overtime	
1993						
November	38.2	26.4	33.1	1.0	6.9	14.3
1995						
November	39.7	26.5	33.9	0.9	6.4	14.7
1996						
February	37.7	25.6	32.7	0.9	6.5	14.1
May	40.1	27.0	34.5	0.9	5.6	16.0
August	38.8	27.2	33.9	0.8	5.4	14.4
November	38.7	26.8	33.6	0.8	6.2	12.7

¹ For explanation of terms and concepts, refer to *Labour Force, Australia*, ABS catalogue number 6203.0.

² For explanation of terms and concepts, refer to *Job Vacancies and Overtime, Australia*, ABS catalogue number 6354.0.

11

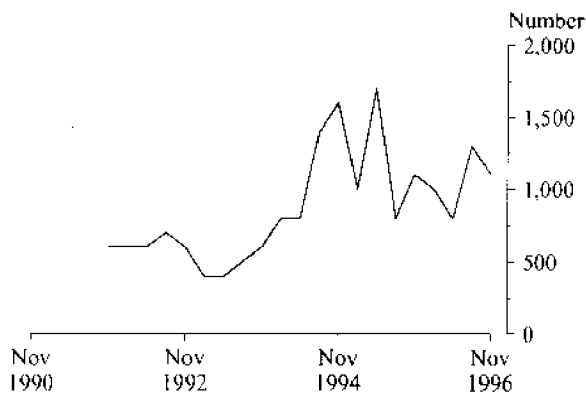
JOB VACANCIES¹: Original

Period	Number	Rate ² %
1993		
November	600	0.4
1995		
November	1 100	0.7
1996		
February	1 000	0.6
May	800	0.5
August	1 300	0.8
November	1 100	0.7

¹ For explanation of terms and concepts refer to *Job Vacancies and Overtime, Australia*, catalogue number 6354.0.

² Job vacancies are expressed as a percentage of the number of job vacancies divided by the number of employees plus job vacancies.

JOB VACANCIES: Original



12

INDUSTRIAL DISPUTES¹: Original

Month	Working days lost '000	Twelve months ending	Working days lost per thousand employees
			no.
1995			
November	0.1	November	30
December	0.2	December	22
1996			
January	0.8	January	24
February	0.1	February	23
March	—	March	20
April	0.1	April	20
May	0.2	May	19
June	0.4	June	17
July	4.4	July	39
August	5.2	August	70
September	1.3	September	77
October	0.1	October	77
November	0.3	November	79
Twelve months ended 1996			
November	13.1		

¹ For explanation of terms and concepts, refer to *Industrial Disputes, Australia*, ABS catalogue number 6321.0.

13

AVERAGE WEEKLY EARNINGS OF EMPLOYEES¹: Original and trend

Quarter	Survey reference period	Full-time adult males		All males	Full-time adult females		All females	Full-time adult persons		All employees
		Weekly ordinary time earnings	Weekly total earnings	Weekly total earnings	Weekly ordinary time earnings	Weekly total earnings	Weekly total earnings	Weekly ordinary time earnings	Weekly total earnings	Weekly total earnings
		\$	\$	\$	\$	\$	\$	\$	\$	\$
ORIGINAL										
1995										
September	18 August	634.60	675.50	598.70	544.50	555.10	384.80	604.20	634.80	495.60
December	17 November	647.90	687.90	615.50	556.10	569.00	403.20	617.30	648.20	513.80
1996										
March	16 February	652.70	691.40	617.80	561.10	569.30	391.80	622.90	651.70	510.00
June	17 May	663.40	702.80	621.90	570.10	583.20	389.30	631.90	662.40	503.30
September	16 August	666.90	699.20	624.30	556.30	567.40	387.70	629.10	654.10	506.50
TREND										
1995										
September	18 August	637.90	679.80	609.10	548.90	559.80	392.00	608.60	640.30	504.90
December	17 November	645.10	685.40	611.40	554.30	565.20	392.80	614.90	645.70	506.40
1996										
March	16 February	653.60	691.70	614.50	560.30	571.00	392.00	622.30	651.30	506.30
June	17 May	662.20	699.30	621.60	564.70	575.90	391.90	629.50	657.60	507.40
September	16 August	669.50	705.80	630.40	567.10	578.80	392.00	635.30	663.00	509.70

¹ For explanation of terms and concepts, refer to *Average Weekly Earnings, States and Australia*, ABS catalogue number 6302.0. (Source: *Average Weekly Earnings, States and Australia*, ABS catalogue number 6302.0.)

14

WEEKLY AWARD RATES OF PAY INDEXES, FULL-TIME ADULT EMPLOYEES¹: Original (Base: June 1985 = 100.0)

Industry	1993	1995	1996		
	December	December	October	November	December
Mining	137.7	137.7	137.7	137.7	137.7
Manufacturing	146.5	150.0	152.1	152.1	152.1
Electricity, gas and water	132.0	136.4	136.6	136.6	136.6
Construction	142.3	144.0	145.1	145.1	145.1
Wholesale trade	137.8	142.7	143.5	143.5	143.5
Retail trade	136.7	142.7	142.8	142.8	142.8
Transport and storage	138.5	143.3	143.9	143.9	143.9
Communication	135.4	135.4	135.4	135.4	135.4
Finance, property and business services	137.5	139.5	139.6	139.6	139.6
Public administration and defence	147.7	154.2	156.0	156.0	156.0
Community services	140.3	144.8	145.5	145.7	145.7
Recreation, personal and other services	147.1	153.0	153.8	153.8	153.8
Total all industries	140.5	145.0	145.9	145.9	145.9

¹ For explanation of terms and concepts, refer to *Award Rates of Pay Indexes, Australia*, ABS catalogue number 6312.0. (Source: *Award Rates of Pay Indexes, Australia*, ABS catalogue number 6312.0.)

15

SUMMARY OF ANNUAL MOVEMENTS IN WAGES AND PRICES: Original

Period	CPI, All groups Hobart	Price index of materials used in house building, All groups, Hobart	Price index of materials used in building other than house building, All groups, Hobart	Average weekly total, earnings, full-time adult employees	Weekly award rates of pay index, full-time adult employees
PERCENTAGE CHANGE FROM PREVIOUS YEAR					
1993					
December	3.3	2.3	2.2	..	1.3
1995					
December	4.4	3.4	3.0	..	1.8
1996					
April	..	1.7	1.4	..	1.2
May	..	0.6	1.2	3.7	1.1
June	3.0	0.7	1.0	..	1.3
July	..	- 0.1	1.0	..	0.9
August	..	- 0.2	0.9	3.0	0.9
September	2.3	- 0.2	0.8	..	0.8
October	..	0.8	0.4	..	0.9
November	..	- 1.0	0.7	n.y.a	0.7
December	1.8	- 0.5	1.0	..	0.7

(Sources:
 Consumer Price Index, ABS catalogue number 6401.0,
 Price Index of Materials Used in House Building, ABS catalogue number 6408.0,
 Price Index of Materials Used in Other than House Building, ABS catalogue number 6407.0,
 Average Weekly Earnings, States and Australia, ABS catalogue number 6302.0,
 Award Rates of Pay Indexes, Australia, ABS catalogue number 6312.0.)

16

HOUSE PRICE INDEX NUMBERS¹, HOBART: Original

(Base of each Index: 1989-90 = 100.0)

	Established house price index		Project home price index	
	Index	% change ²	Index	% change ²
1993-94	122.5	5.1	117.7	3.2
1994-95	129.0	5.3	121.3	3.1
1995-96	129.8	0.6	123.4	1.7
1994				
September	128.2	1.7	120.1	0.6
December	128.2	—	120.5	0.3
1995				
March	129.4	0.9	121.6	0.9
June	130.1	0.5	123.1	1.2
September	129.2	0.7	123.5	0.3
December	129.1	- 0.1	123.5	—
1996				
March	129.8	+ 0.5	123.3	- 0.2
June	131.2	+ 1.1	123.3	—
September	130.2	- 0.8	123.3	—

¹ Used in calculating the mortgage interest charges component of the Consumer Price Index.

² Percentage change over previous period.

(Source: House Price Indexes: Eight Capital Cities, ABS catalogue number 6416.0)

17

CONSUMER PRICE INDEX, HOBART AND EIGHT CAPITAL CITIES COMBINED^{1, 2}: Original (Base of each index: year 1989-90 = 100.0)

Period	Hobart					
	Food	Clothing	Housing ³	Household equipment and operation	Transportation	Tobacco and alcohol
1994						
June	112.2	106.4	94.2	112.4	112.8	134.8
September	113.9	106.6	94.8	112.8	113.9	137.2
December	113.3	105.3	97.6	113.9	115.0	139.1
1995						
March	115.4	105.0	102.7	114.9	115.1	140.3
June	116.1	106.1	104.5	115.4	117.2	143.1
September	117.3	105.9	106.0	116.5	119.4	144.3
December	117.1	105.6	106.5	117.5	120.1	145.9
1996						
March	118.1	106.3	107.2	117.8	119.0	150.3
June	118.4	106.0	107.6	118.5	119.8	153.3
September	120.0	105.9	107.4	119.1	119.7	153.7
December	120.6	105.6	104.8	119.4	121.8	152.7

Period	Hobart			Weighted average of eight capital cities		
	Health and personal care	Recreation and education	Index, all groups	% change over previous period, all groups	Index	% change over previous period
1994						
June	137.9	111.3	112.4	+ 0.4	111.2	+ 0.7
September	138.7	111.7	113.3	+ 0.8	111.9	+ 0.6
December	138.7	113.0	114.2	+ 0.8	112.8	+ 0.8
1995						
March	140.4	115.4	116.1	+ 1.7	114.7	+ 1.7
June	141.0	114.0	117.1	+ 0.9	116.2	+ 1.3
September	146.7	113.3	118.4	+ 1.1	117.6	+ 1.2
December	146.9	115.8	119.2	+ 0.7	118.5	+ 0.8
1996						
March	149.7	117.1	120.1	+ 0.8	119.0	+ 0.4
June	150.5	116.0	120.6	+ 0.4	119.8	+ 0.7
September	154.1	115.1	121.1	+ 0.4	120.1	+ 0.3
December	154.8	116.8	121.3	+ 0.2	120.3	+ 0.2

¹ Further information on construction of CPI indexes is contained in the bulletin *The Australian Consumer Price Index Concepts, Sources and Methods* (Catalogue No. 6461.0).

² The CPI is now published on a reference base of 1989-90 = 100.0.
(Source: *Consumer Price Index*, ABS catalogue number 6401.0.)

PRICE INDEX OF MATERIALS USED IN BUILDING OTHER THAN HOUSE BUILDING, HOBART: **Original**
(Base year: 1989 90 = 100.0)

<i>Index numbers for selected major building materials</i>						
<i>Period</i>	<i>Structural timber</i>	<i>Clay bricks</i>	<i>Ready mixed concrete</i>	<i>Precast concrete products</i>	<i>Steel decking, cladding etc.</i>	<i>Structural steel</i>
1995						
October	119.7	123.2	117.2	130.3	111.0	120.9
November	120.1	123.2	116.3	130.3	111.0	120.9
December	120.1	123.3	114.5	130.4	111.0	121.9
1996						
January	120.1	123.3	116.9	130.4	111.0	121.9
February	116.9	123.3	115.9	128.4	112.1	121.9
March	116.9	123.7	113.2	128.4	112.3	121.9
April	116.9	123.7	113.2	128.4	112.3	122.7
May	114.4	123.7	112.9	128.4	112.3	122.7
June	113.8	124.5	112.1	128.4	112.3	123.7
July	114.5	124.5	114.2	132.6	112.3	125.2
August	112.7	124.5	115.5	132.6	112.3	126.0
September	112.7	124.5	114.7	132.6	112.3	124.7
October p	110.6	124.5	115.8	132.6	112.3	124.7
November p	110.3	125.6	115.8	132.6	112.2	126.5
December p	108.9	125.6	116.3	132.6	112.2	126.7

<i>Index numbers for selected major building materials</i>							
<i>Period</i>	<i>Reinforcing steel bar, fabric and mesh</i>	<i>Aluminium windows</i>	<i>Fabricated steel products</i>	<i>Builders' hardware</i>	<i>Sand & aggregate</i>	<i>Paint & other coatings</i>	<i>Non-ferrous pipes & fittings</i>
1995							
October	109.2	104.5	108.3	120.7	133.1	118.9	169.1
November	109.2	104.5	108.3	119.2	133.1	118.7	169.1
December	109.2	104.5	108.3	117.7	133.1	121.4	169.1
1996							
January	109.2	104.5	108.3	118.3	133.1	121.5	169.1
February	109.2	104.5	108.1	117.7	133.1	121.5	169.4
March	109.2	104.7	108.3	117.7	133.1	121.5	169.4
April	109.2	104.4	111.5	117.3	133.1	118.1	172.8
May	109.2	104.4	111.5	116.0	133.1	120.6	174.5
June	109.2	104.4	111.9	116.1	133.1	124.5	174.5
July	109.2	104.4	111.9	115.4	133.1	126.1	168.7
August	110.7	104.4	112.4	118.9	133.1	126.1	167.9
September	110.8	104.4	113.6	119.0	133.1	126.7	167.9
October p	110.9	105.5	113.6	119.1	133.1	126.7	160.8
November p	110.9	105.5	113.4	119.1	133.1	127.0	160.9
December p	110.9	105.5	113.4	118.2	133.1	128.2	162.4

(Source: Price Index of Materials Used in Other than House Building, ABS catalogue number 6407.0.)

continued

18

PRICE INDEX OF MATERIALS USED IN BUILDING OTHER THAN HOUSE BUILDING, HOBART: **Original**—continued
(Base year: 1989-90 = 100.0)

Period	All electrical materials		All mechanical services		All plumbing materials	
	Index	% change over previous period	Index	% change over previous period	Index	% change over previous period
1995						
October	118.7	-0.2	115.2	+1.7	127.4	+0.6
November	118.7	—	114.7	-0.4	127.4	—
December	118.5	-0.2	114.8	+0.1	127.5	+0.1
1996						
January	117.8	-0.6	114.8	—	127.5	—
February	117.8	—	115.4	+0.5	127.6	+0.1
March	118.6	+0.7	115.7	+0.3	127.6	—
April	118.3	-0.3	116.1	+0.3	126.6	-0.8
May	119.6	+1.1	116.1	—	127.1	+0.4
June	119.5	-0.1	116.5	+0.3	127.3	+0.2
July	119.5	—	116.3	-0.2	127.0	-0.2
August	113.7	-4.9	117.4	+0.9	126.0	-0.8
September	113.9	+0.2	117.6	+0.2	126.0	—
October p	118.3	+3.9	117.3	-0.3	120.4	-4.4
November p	118.3	—	116.5	-0.7	120.7	+0.2
December p	118.3	—	116.5	—	121.2	+0.4
Period	All groups excluding electrical materials and mechanical services		All groups			
	Index	% change over previous period	Index	% change over previous period		
1995						
October	115.8	+0.3	115.5	+0.5		
November	115.7	-0.1	115.3	-0.2		
December	115.5	-0.2	115.1	-0.2		
1996						
January	115.9	+0.3	115.3	+0.2		
February	115.6	-0.3	115.2	-0.1		
March	115.3	-0.3	115.1	-0.1		
April	115.2	-0.1	115.1	—		
May	115.3	+0.1	115.2	+0.1		
June	115.3	—	115.3	+0.1		
July	116.1	+0.7	115.8	+0.4		
August	116.5	+0.3	115.9	+0.1		
September	116.3	-0.2	115.8	-0.1		
October p	116.2	-0.1	116.0	+0.2		
November p	116.6	+0.3	116.1	+0.1		
December p	116.7	+0.1	116.2	+0.1		

(Source: Price Index of Materials Used in Other than House Building, ABS catalogue number 6407.0.)

Year or month	Dairy products ¹			Staff-hours worked ²	
	Whole milk ³	Factory butter ⁴	Factory cheese	Textile manufacturing ⁵	Vegetable preserving
	million litres	tonnes	tonnes	'000	'000
1993-94	447.3	7 846	22 461	1 575	2 002
1994-95	436.5	8 105	20 529	1 527	1 838
1995-96	513.8	9 589	25 371	1 443	1 784
1993					
November	60.9	968	3 088	128	153
1995					
November	69.8	1 124	3 775	136	142
1996					
September	48.8	926	2 225	108	117
October	69.3	1 333	2 765	125	119
November	70.9	1 367	3 478	119	107
Year or month	Newsprint ⁶	Refined zinc	Metal, refin. index ⁷	Electricity	Gas
	'000 tonnes	'000 tonnes		million kW.h	'000 MJ
1993-94	208.9	193.8	105.5	8 855	55 767
1994-95	222.7	189.8	98.3	8 688	51 933
1995-96	242.9	207.8	104.7	9 100	41 035
1993					
November	15.6	16.0	107.9	702	4 115
1995					
November	20.9	16.5	101.0	710	2 978
1996					
September	17.7	17.8	116.7	831	1 956
October	18.1	17.1	116.6	790	1 500
November	19.7	17.6	116.5	776	1 000

¹ Source: Australian Dairy Corporation.

² Changing productivity per staff-hour makes these indicators unsatisfactory for long-term comparisons.

³ Includes the whole milk equivalent of farm cream intake.

⁴ Includes butter equivalent of butter oil.

⁵ Includes spinning, weaving and carpet making. Reported by establishments which manufacture textiles only, or manufacture clothing and textiles in the one plant.

⁶ Excludes production of directory newsprint and high grade specialty paper.

⁷ Metallurgical refining index (Base: 1979-80 = 100.0) Output from selected establishments covering the smelting and refining of ferro-alloys, zinc and aluminium. The weighting pattern is based on the establishments' value added as derived from the 1979-80 Manufacturing Census. For multi-product establishments, value added was apportioned to products on the basis of gross receipts from each product.

(Source: ABS unpublished data.)

20

LIVESTOCK SLAUGHTERING: **Original**

Year or month	Cattle					
	Bulls, bullocks and steers	Cows and heifers	Calves	Sheep	Lambs	Pigs
	'000	'000	'000	'000	'000	'000
1993-94	101.8	85.2	23.2	526.1	437.8	95.8
1994-95	111.2	96.7	28.8	569.3	477.2	92.9
1995-96 p	99.2	85.7	41.7	390.2	410.0	81.8
1994						
December	11.3	9.2	0.1	64.2	41.3	9.7
1995						
December p	9.5	7.6	0.5	44.8	40.5	8.4
1996						
January p	11.2	6.8	0.1	43.6	38.9	6.1
February p	8.6	7.8	0.1	39.8	40.4	6.3
March p	9.0	8.9	0.2	40.6	41.2	7.2
April p	6.6	6.4	0.9	31.4	30.7	6.0
May p	10.8	10.7	1.4	42.5	39.7	7.3
June p	9.1	9.0	0.7	30.6	33.1	6.6
July p	7.6	5.5	1.8	22.9	26.0	6.8
August p	6.4	4.2	13.5	12.2	21.6	5.9
September p	6.6	4.8	17.0	13.1	26.2	5.9
October p	7.9	6.0	6.2	20.6	25.9	5.5
November p	9.8	7.8	0.6	36.5	28.0	5.2
December p	12.9	8.7	0.2	48.8	29.1	6.6

(Source: *Livestock Products, Australia*, ABS catalogue number 7215.0.)

21

LIVESTOCK SLAUGHTERING: **Seasonally adjusted and trend**

Month	Seasonally adjusted			Trend		
	Cattle and calves	Sheep and lambs	Pigs	Cattle and calves	Sheep and lambs	Pigs
	'000	'000	'000	'000	'000	'000
1994						
December	21.1	89.7	7.5	20.7	88.7	7.6
1995						
December	27.7	76.7	6.8	19.7	70.4	6.9
1996						
January	18.8	71.7	7.4	19.3	69.3	6.9
February	17.9	64.2	6.8	18.9	67.6	6.9
March	18.3	63.5	7.0	18.6	66.0	6.8
April	16.0	60.0	6.6	18.6	64.6	6.7
May	21.8	69.4	6.4	19.0	63.3	6.6
June	21.2	61.2	6.2	19.6	61.6	6.5
July	18.0	67.9	6.9	20.0	60.0	6.4
August	19.6	50.8	6.0	20.3	58.7	6.2
September	22.8	55.3	6.4	20.7	58.4	6.0
October	19.7	55.5	5.6	21.1	59.3	5.8
November	20.6	64.9	5.2	21.5	61.0	5.6
December	23.9	69.6	5.6	22.1	63.4	5.4

(Source: ABS unpublished data)

22

MEAT PRODUCTION¹: Original

Year or month	Beef tonnes	Veal tonnes	Mutton tonnes	Lamb tonnes	Pigmeat ² tonnes	Total tonnes
1993-94	47 458	515	9 992	7 047	6 019	71 031
1994-95	49 907	977	11 230	8 412	5 982	76 509
1995-96 p	44 812	1 091	8 283	7 727	5 346	67 259
1994						
December	5 104	10	1 275	691	649	7 731
1995						
December p	4 145	17	983	764	546	6 456
1996						
January p	4 467	4	937	733	397	6 538
February p	4 122	5	852	761	410	6 150
March p	4 175	9	860	777	470	6 290
April p	3 012	26	657	579	397	4 671
May p	5 230	42	892	749	476	7 389
June p	4 429	21	638	624	430	6 143
July p	3 203	48	475	488	443	4 657
August p	2 564	344	249	407	385	3 949
September p	2 811	430	269	493	384	4 387
October p	3 375	157	425	488	360	4 804
November p	4 218	17	792	527	342	5 897
December p	5 488	7	1 081	547	430	7 553

¹ Carcass weight.

² Includes pork used for production of bacon and ham.

(Source: *Livestock Products, Australia*, ABS catalogue number 7215.0.)

23

PRINCIPAL MINERAL CONCENTRATES PRODUCED: Original

Year or quarter	Copper	Iron (pellets)	Lead	Lead- Zinc	Tin	Zinc
Year or quarter	'000 tonnes	'000 tonnes	'000 tonnes	'000 tonnes	'000 tonnes	'000 tonnes
1993-94	128.1	1 565.9	93.4	57.5	13.4	316.5
1994-95	59.4	1 483.8	97.4	45.3	14.3	350.6
1995-96	53.5	1 681.3	106.3	38.6	16.0	361.5
1995						
September	4.5	463.0	28.4	11.2	4.1	93.6
December	7.8	416.0	29.7	6.8	4.1	98.1
1996						
March	19.8	326.9	24.1	11.4	3.5	84.8
June	21.5	475.4	24.1	9.2	4.3	85.0
September	26.0	439.3	30.6	10.3	3.9	88.6
December p	25.6	366.7	24.9	11.0	4.0	89.5

(Source: Tasmania—Development and Resources)

24

SAWMILLS AND PLYWOOD MILLS, LOGS DELIVERED AND TIMBER PRODUCED: **Original**

Year or quarter	Tasmanian-grown logs delivered					Sawn, peeled and sliced timber produced ¹				
	Eucalypts	Hardwoods, excluding eucalypts ²	Plantation ³ softwoods	Native softwoods ⁴	Total	Eucalypts	Hardwoods, excluding eucalypts ²	Plantation ³ softwoods	Native softwoods ⁴	Total
1993-94	584.3	15.3	299.2	1.5	900.4	203.5	3.1	141.0	0.5	348.0
1994-95	653.1	12.6	304.9	2.8	973.4	212.5	4.3	142.7	0.6	360.1
1995-96	602.8	13.0	343.7	1.4	960.9	192.4	4.4	152.0	0.5	349.3
1994										
September	170.2	3.8	76.3	0.6	250.9	59.5	1.2	35.1	0.1	95.9
December	163.0	3.7	68.8	0.3	235.8	55.2	1.0	36.1	0.2	92.5
1995										
March	132.3	3.0	82.5	1.1	218.9	44.5	1.0	37.0	0.1	82.6
June	187.6	2.1	77.4	0.7	267.8	53.4	1.1	34.6	0.1	89.2
September	184.3	1.8	79.9	0.2	266.2	55.4	1.3	36.0	0.1	92.8
December	139.1	1.5	70.2	0.2	211.0	49.0	1.0	36.0	0.2	86.2
1996										
March	136.6	6.7	98.1	0.3	241.7	41.5	0.9	41.2	0.1	83.7
June	142.9	3.0	95.5	0.6	242.0	46.5	1.2	38.8	0.1	86.6
September	134.4	2.4	97.3	—	234.1	47.3	1.1	43.0	0.1	91.4

¹ Includes plywood, veneer and sliced timber production converted to an equivalent cubic measurement.

² Includes blackwood, myrtle, sassafras etc.

³ Radiata pine.

⁴ Includes Huon pine, celery top pine and King William pine.

(Source: ABS unpublished data.)

25

CHIPPING AND GRINDING OF WOOD¹: **Original**

Year or quarter	Producing locations ²	Materials used ³		
		Logs delivered ⁴	Sawmill offcuts	Chipped and ground wood production
	no.	'000 m ³	'000 m ³	('000 tonnes green weight)
1993-94	30	3 448.8	339.8	3 726.1
1994-95	31	4 064.1	394.2	4 343.1
1995-96	31	3 510.0	457.9	3 820.1
1994				
September	30	939.8	86.3	991.3
December	31	1 065.8	92.0	1 115.4
1995				
March	31	1 090.6	95.7	1 177.1
June	31	967.9	120.1	1 059.3
September	32	935.6	118.2	1 044.1
December	31	932.1	104.6	939.9
1996				
March	32	842.6	109.8	958.0
June	31	799.6	125.3	878.1
September	30	767.5	133.5	870.9

¹ Both hardwoods and softwoods, separate details are not available.

² Capable of producing at end of year or actually producing during quarter.

³ Data reported by weight, converted to cubic measure by the factor 0.95 m³ per tonne.

⁴ Includes log equivalent of limbwood and billets.

(Source: ABS unpublished data.)

26

LOGS DELIVERED FOR MILLING OR CHIPPING: **Original**

Year or quarter	Sawmilling and plywood milling			Chipping and grinding ¹			Total		
	Crown land ²	Private land	Total	Crown land ²	Private land	Total	Crown land ²	Private land	Total
	'000 m ³	'000 m ³	'000 m ³	'000 m ³	'000 m ³	'000 m ³	'000 m ³	'000 m ³	'000 m ³
1993-94	696.5	203.9	900.4	1 697.0	1 751.8	3 448.8	2 393.5	1 955.7	4 349.2
1994-95	780.3	193.2	973.4	1 966.8	2 097.3	4 064.1	2 747.1	2 290.4	5 037.6
1995-96	773.5	187.4	960.9	1 579.6	1 930.4	3 510.0	2 353.1	2 117.8	4 470.9
1994									
September	199.8	51.1	250.9	481.0	458.8	939.8	680.8	509.9	1 190.7
December	180.6	55.2	235.8	467.9	597.8	1 065.8	648.5	653.0	1 301.6
1995									
March	184.7	34.2	218.9	480.3	610.3	1 090.6	665.0	644.5	1 309.5
June	215.2	52.7	267.8	537.6	430.3	967.9	752.8	483.0	1 235.8
September	214.1	r 52.2	266.2	438.2	497.4	935.6	r 652.2	r 549.6	r 1 201.9
December	165.2	45.8	211.0	388.3	543.8	932.1	553.5	589.6	1 143.1
1996									
March	r 202.3	r 39.4	241.7	405.3	437.3	842.6	r 607.6	r 476.7	1 084.3
June	r 191.9	r 50.1	242.0	347.9	451.8	799.6	539.7	r 501.8	1 041.6
September	194.2	39.9	234.1	403.5	364.0	767.5	597.8	403.9	1 001.7

¹ Logs used are generally below sawmilling standard; includes log equivalent of limbwood and billets.

² Comprises all areas (including concession areas) from which royalties are payable to Forestry Tasmania.
(Source: ABS unpublished data.)

27

BUILDING APPROVALS: Original

Year or month	New residential building			Total dwelling units	Value				
	Houses	Other ¹	Conversions etc.		New dwelling units	Alterations and additions ² to residential building	Non-residential building ³		Total of all building
							Private	Total	
no.	no.	no.	no.	\$'000	\$'000	\$'000	\$'000	\$'000	
1993-94	3 113	1 034	11	4 158	301 963	39 522	81 251	145 922	487 407
1994-95	2 576	596	14	3 176	244 623	39 963	117 984	161 567	446 152
1995-96	1 938	601	7	2 546	217 445	36 890	119 849	216 752	471 086
1993									
December	276	95	—	371	26 743	3 521	4 461	10 385	40 649
1995									
December	145	74	—	219	18 832	2 643	13 277	13 597	35 072
1996									
September	156	4	—	160	13 249	1 857	9 549	10 306	25 412
October	154	33	3	190	17 314	3 530	9 585	10 647	31 491
November	146	22	—	168	13 351	3 347	6 375	7 262	23 960
December	130	23	—	153	12 943	2 371	3 796	4 396	19 710

¹ New individual dwelling units (e.g. flats, home units and villa units).

² Valued at \$10,000 and over.

³ Comprises non-residential building (new plus alterations and additions) valued at \$50,000 and over.

(Source: *Building Approvals, Tasmania*, ABS catalogue number 8731.6.)

28

SECURED HOUSING COMMITMENTS¹: Original, seasonally adjusted and trend

Month	Total number of dwellings ²			Total value of commitments		
	Original	Seasonally adjusted	Trend	Original	Seasonally adjusted	Trend
	no.	no.	no.	\$'000	\$'000	\$'000
1995						
November	1 035	986	979	70.3	68.7	67.3
December	864	931	957	59.6	63.0	65.7
1996						
January	840	951	933	59.1	63.0	63.8
February	911	887	904	63.3	62.7	61.6
March	988	884	877	69.4	61.0	59.9
April	849	888	859	58.9	61.3	59.4
May	942	825	857	64.7	55.6	60.9
June	841	830	869	58.3	61.0	63.7
July	1 032	1 012	1 059	66.1	64.7	67.1
August	1 163	1 175	1 076	77.2	79.6	70.2
September	1 067	1 098	1 082	68.8	70.4	72.2
October	1 117	1 155	1 078	75.9	80.4	73.0
November	909	924	1 070	60.7	61.5	73.3
December	791	849	961	54.4	57.5	65.7

¹ Commitment is a firm offer of housing finance. It either has been, or is normally expected to be, accepted. Includes commitments to provide housing finance to employees and commitments accepted and cancelled in the same month. Excludes alterations and additions. Includes refinancing.

² Includes new dwellings, established dwellings and refinancing. Excludes alterations and additions.

(Source: *Housing Finance for Owner Occupation, Australia*, ABS catalogue number 5609.0.)

29

BANKING STATISTICS¹: Original

Month	Deposits				
	Current bearing interest	Current – not bearing interest	Fixed	Investment savings accounts	Statement savings accounts
	\$m	\$m	\$m	\$m	\$m
1995					
December	628	279	1 659	546	191
1996					
January	646	272	1 646	546	190
February	665	265	1 639	544	174
March	690	271	1 657	550	160
April	689	270	1 693	547	160
May	674	262	1 697	541	158
June	659	260	1 707	541	158
July	687	253	1 737	540	161
August	692	249	1 758	543	163
September	690	240	1 768	552	165
October	699	238	1 787	559	168
November	692	237	1 791	560	169
December	699	244	1 771	570	188

Month	Deposits			Loans ²
	Passbook/School savings accounts	Other	Total	
	\$m	\$m	\$m	
1995				
December	177	127	3 607	4 374
1996				
January	175	127	3 601	4 372
February	171	127	3 585	4 422
March	171	128	3 626	4 450
April	168	130	3 657	4 471
May	164	127	3 623	4 511
June	161	128	3 615	4 529
July	156	127	3 660	4 532
August	153	127	3 685	4 541
September	151	129	3 694	4 520
October	147	129	3 728	4 545
November	140	132	3 722	4 513
December	134	133	3 739	4 533

¹ Details are the averages of weekly figures for each month. The figures are derived from returns submitted by banks authorised under the *Banking Act* together with similar returns voluntarily submitted by the State banks; they exclude the Reserve Bank.

² Excludes non-resident loans.

(Source: Reserve Bank of Australia.)

30

PRIVATE NEW CAPITAL EXPENDITURE BY TYPE OF ASSET¹: Original

Year or quarter	New buildings and structures	Equipment, plant, and machinery	Total
	\$m	\$m	\$m
	1993–94	100	341
1994–95	133	503	636
1995–96	178	394	571
1995			
September	50	93	143
December	46	91	137
1996			
March	45	94	139
June	37	116	153
September	33	95	128

¹ Estimates based on a sample survey and therefore subject to sampling variability. Covers selected industries only—mining, manufacturing, finance, property and other selected industries.

(Source: State Estimates of Private New Capital Expenditure, ABS catalogue number 5646.0.)

31

PASSENGER ARRIVALS AND DEPARTURES, TASMANIA¹: Original

Period	By air				Total departures ²	Cruise ships	
	Interstate arrivals	International arrivals	By sea	Total		Arrivals	Departures
1992	652 092	4 428	114 969	771 489	761 109	4 608	4 608
1993	694 244	5 144	115 381	814 769	814 835	2 033	2 033
1994	745 508	4 166	128 644	878 318	880 936	6 592	6 592
1995	811 784	3 982	116 869	932 635	931 278	6 199	6 199
1995							
September	73 105	407	11 150	84 662	72 559	—	—
1996							
July	56 537	—	7 550	64 087	68 288	—	—
August	56 695	—	7 952	64 647	66 400	—	—
September	74 597	—	11 257	85 854	75 490	—	—

¹ The following persons are not included in these statistics: passengers under three years of age accompanied by an adult; passengers travelling on chartered flights with minor carriers; passengers traveling on private or VIP flights; and passengers from or departing for overseas other than direct flights to New Zealand.

² The proportion of departing passengers who were visitors was shown to be about 58% in the 1981 Tasmanian Visitor Survey, 55% in the 1984 Tasmanian Visitor Survey, 53% in the 1986 Tasmanian Visitor Survey, 65% in the 1990 Tasmanian Visitor Survey, 60% in the 1994 survey, and 58% in the 1995 Tasmanian Visitor Survey.

(Source: Department of Tourism)

32

TOTAL PASSENGER ARRIVALS BY AIR AND SEA, TASMANIA: Original, seasonally adjusted and trend

Period	Original	Seasonally adjusted ¹	Trend
1995			
September	84 662	79 187	79 598
1996			
July	64 087	80 146	81 734
August	64 647	84 612	81 947
September	85 854	78 478	81 874

¹ There is an annual recalculation of seasonal adjustment factors to include the most recent year's arrivals. This occurs at the end of each financial year and may cause revisions to previously published seasonally adjusted and trend figures. A full time series of seasonally adjusted and trend series from January 1971 is available on request, telephone (03) 6220 5870.
(Source: Department of Tourism. ABS unpublished data.)

HOTELS, MOTELS, ETC. WITH FACILITIES						
Period	Original		Room nights		Original	
	Establishments ¹ no.	Guest rooms ¹ no.	Seasonally adjusted ² no.	Trend estimates ² no.	Room occupancy rate %	Takings from accommodation \$'000
September quarter						
1994	174	5 316	n.a.	n.a.	43.5	15 229
1995	179	5 452			42.1	15 501
1996	188	5 604			38.7	14 362
1994						
July	n.a.	n.a.	91 256	90 054	40.6	4 711
August	n.a.	n.a.	89 909	89 551	38.5	4 443
September	174	5 316	91 464	88 751	51.6	6 074
1995						
July	n.a.	n.a.	91 724	90 010	39.2	4 866
August	n.a.	n.a.	91 661	90 657	38.6	4 687
September	179	5 452	90 106	91 103	48.7	5 948
1996						
July	n.a.	n.a.	86 142	86 049	36.6	4 671
August	n.a.	n.a.	92 416	85 783	36.4	4 491
September	188	5 604	80 295	85 609	43.2	5 200
HOLIDAY UNITS						
Period	Original		Unit nights		Original	
	Establishments ¹ no.	Units ¹ no.	Seasonally adjusted ² no.	Trend estimates ² no.	Unit occupancy rate %	Takings from accommodation \$'000
September quarter						
1994	53	804	n.a.	n.a.	42.5	2 044
1995	54	821			38.3	1 933
1996	57	858			35.5	1 922
1994						
July	n.a.	n.a.	13 339	13 384	36.7	583
August	n.a.	n.a.	13 333	13 370	35.2	550
September	52	793	13 543	13 428	55.9	911
1995						
July	n.a.	n.a.	12 144	12 158	33.1	558
August	n.a.	n.a.	11 760	12 233	30.2	485
September	54	821	12 918	12 446	51.9	890
1996						
July	n.a.	n.a.	12 153	12 074	31.1	567
August	n.a.	n.a.	11 762	11 936	28.9	528
September	57	858	12 144	11 833	46.8	827
CARAVAN PARKS						
Period	Original		Site nights		Original	
	Establishments ¹ no.	Sites and cabins ¹ no.	Seasonally adjusted ² no.	Trend estimates ² no.	Site occupancy rate %	Takings from accommodation \$'000
September quarter						
1994	75	6 924	n.a.	n.a.	25.8	1 036
1995	72	6 417			27.7	1 111
1996	73	6 491			28.3	1 209
1994						
July	n.a.	n.a.	65 090	64 111	24.8	294
August	n.a.	n.a.	65 978	64 925	25.2	303
September	75	6 924	64 782	65 522	27.5	439
1995						
July	n.a.	n.a.	65 084	65 398	26.7	310
August	n.a.	n.a.	64 125	65 309	26.8	321
September	72	6 417	66 559	65 272	29.5	480
1996						
July	n.a.	n.a.	67 597	67 112	27.3	347
August	n.a.	n.a.	68 379	67 505	27.9	361
September	73	6 491	67 006	67 735	29.9	501

¹ At end of quarter.² Seasonally adjusted and trend estimates are revised annually because of yearly seasonal re-analysis.

(Source: Tourist Accommodation, ABS catalogue number 8635.6.)

34 REGISTRATIONS OF NEW MOTOR VEHICLES¹: Original

Year or month	Passenger vehicles	Other vehicles ²	Total (excl. motor cycles)	Vehicles registered by vehicle rental businesses ³	Motor cycles
	no.	no.	no.	no.	no.
1994	10 543	2 837	13 380	1 708	376
1995	10 919	2 874	13 793	1 952	393
1996	11 445	2 726	14 171	2 384	462
1994					
December	1 146	217	1 363	440	48
1995					
December	1 489	245	1 734	842	37
1996					
January	670	203	873	5	36
February	777	212	989	62	48
March	764	197	961	3	33
April	659	159	818	—	30
May	916	286	1 202	3	44
June	744	250	994	9	32
July	1 099	242	1 341	232	26
August	1 040	296	1 336	216	52
September	1 171	177	1 348	448	38
October	1 042	265	1 307	213	35
November	1 072	195	1 267	370	50
December	1 491	244	1 735	823	38

¹ Includes State and Commonwealth Government-owned motor vehicles other than those belonging to the defence services. Excludes tractors, plant and equipment, caravans and trailers.

² Comprises utilities, panel vans, rigid and articulated trucks and other truck-type vehicles (i.e. motor vehicles designed for purposes other than freight carrying, e.g. campervans, tow trucks, ambulances and hearses) and buses.

³ These figures are included in previous columns.

(Source: Motor Vehicle Registrations Australia, ABS catalogue number 9301.0. ABS unpublished data.)

35 TURNOVER OF RETAIL ESTABLISHMENTS AT CURRENT PRICES¹: Original and trend

Period	Original \$m	Trend estimates	
		\$m	Change from corresponding month of previous year %
1994			
December	312.1	229.3	- 1.0
1995			
December	320.5	242.6	5.8
1996			
January	240.5	244.6	6.2
February	233.5	246.2	6.1
March	241.3	247.2	5.7
April	237.8	247.3	5.0
May	250.3	246.7	4.3
June	230.6	245.5	3.6
July	229.1	244.4	3.1
August	238.2	243.8	2.9
September	222.5	244.0	2.7
October	249.1	244.8	2.4
November	257.9	245.9	2.2
December	324.3	247.3	1.9

¹ Survey has been re-designed—see Information Paper (8511.0).
(Source: Retail Trade, Australia, ABS catalogue number 8501.0.)

	NSW	Vic.	Qld	SA	WA	Tas.	Aust. ¹
Population							
Estimated resident population, June 1996 ('000) p	6 190.2	4 541.0	3 354.7	1 479.2	1 762.7	473.4	18 289.1
Proportion of Australian population, June 1996 (%) p	33.8	24.8	18.3	8.1	9.6	2.6	100.0
Population growth rate, 12 months to June 1996 (%) p	1.3	0.9	2.4	0.4	1.8	0.1	1.3
Labour Force							
Employment growth, 12 months to January 1997 (trend series) (%)							
Males	1.5	1.2	1.4	- 0.8	2.0	- 1.6	1.1
Females	0.6	2.2	1.8	1.9	3.6	- 3.8	1.4
Persons	1.1	1.6	1.6	0.3	2.6	- 2.5	1.2
Unemployment rate (trend series), January 1997 (%)	7.7	9.1	9.8	9.4	7.7	10.4	8.6
Unemployment growth, 12 months to January 1997 (trend series) (%)	0.3	5.6	7.2	0.1	1.7	1.8	3.1
Participation rate (trend series), January 1997 (%)	62.4	64.1	64.6	61.5	66.3	59.5	63.6
Average weekly overtime worked per employee, November 1996 (hours)	1.2	1.3	1.0	1.0	1.2	0.8	1.1
Job vacancy rate, November 1996 (%)	1.1	0.8	0.8	0.5	1.3	0.7	0.9
Working days lost through industrial disputes, 12 months to November 1996 (days per '000 employees)	157	112	160	78	69	79	129
Wages and Prices							
Average weekly total earnings, full-time adult employees (trend series) August 1996 (\$)							
Males	825.8	762.8	715.6	726.7	813.0	705.8	778.3
Females	645.5	607.2	577.5	573.3	598.3	578.8	614.9
Persons	760.2	708.8	664.6	678.3	734.0	663.0	719.7
Average weekly total earnings, full-time adult employees, growth rate, 12 months to August 1996 (%)	4.3	3.0	2.9	4.3	4.2	3.5	3.7
Consumer price index, all groups, annual growth to December quarter 1996 (%) ²	1.8	1.2	1.9	1.2	1.8	1.8	1.5
Building							
% change in the number of new residential dwelling units approved in 12 months ended December 1996, over the same period previous year	- 8.4	- 9.1	- 5.4	- 22.6	- 11.2	- 21.4	- 9.5
Finance and Retail Trade							
% change in private new capital expenditure, 12 months ended September 1996, over the same period previous year	9.9	33.3	12.3	2.2	- 0.8	- 17.6	14.2
% change in trend estimates turnover of retail establishments, December 1996 (change from corresponding month of the previous year)	0.9	4.1	- 0.2	- 1.8	- 2.5	1.9	0.9
Transport							
% change in number of new motor vehicles (excluding motorcycles) registered 12 months ended November 1996, over the same period previous year	- 1.1	3.8	3.7	- 1.0	4.6	5.6	1.5
Agriculture							
% change in the number of livestock slaughtered 12 months ended December 1996 over the same period previous year							
Cattle and calves	2.9	7.2	- 14.7	- 13.9	- 0.2	- 4.0	- 2.8
Sheep and lambs	- 2.9	- 6.7	21.1	- 12.5	9.5	- 16.2	- 3.6
Tourism							
Room occupancy rates for hotels, motels etc. with facilities, September quarter 1996 (%)	59.1	52.0	65.5	48.9	62.0	38.7	58.8
Australian National and State Accounts							
% change in GSP (GDP), Average 1989-90 Prices							
Trend Series							
June qtr 1996 to Sept. qtr 1996	0.9	0.2	1.3	—	0.3	- 0.5	0.5
Sept. qtr 1995 to Sept. qtr 1996	3.7	2.4	5.9	2.0	5.5	1.9	3.9

¹ Australian totals include the ACT and NT.² CPI applies to State capitals.

EXPLANATORY NOTES

INTRODUCTION

1 This publication contains latest figures for a comprehensive range of economic indicators. Statistics shown in this publication are the latest available at the date of preparation and may be subject to revision in subsequent issues. In a number of cases figures appearing in this publication are preliminary and are subject to revision in subsequent issues. Reference should therefore always be made to the latest issue or to the statistical publication on the specific subject.

SEASONAL ADJUSTMENT AND TREND ESTIMATION

2 Seasonal adjustment is a means of removing the estimated effects of normal seasonal variation from the series so that the effects of other influences on the series can be more clearly recognised. Seasonal adjustment does not aim to remove the irregular or non-seasonal influences which may be present in any particular month. This means that month-to-month movements of the seasonally adjusted estimates may not be reliable indicators of trend behaviour.

3 The smoothing of seasonally adjusted series reduces the impact of the irregular components of the seasonally adjusted series and creates trend estimates. These trend estimates are derived by applying a 13-term Henderson-weighted moving average to all months except the last six. The last six monthly trend estimates are obtained by applying surrogates of the Henderson average to the seasonally adjusted series. Trend series are used to analyse the underlying behaviour of the series over time.

4 While this smoothing technique enables estimates to be produced for the latest month, it does result in revisions to the most recent months as additional observations become available. Generally, subsequent revisions become smaller and after 3 months have a negligible impact on the series. Revisions also occur as a result of the annual review of seasonal factors.

5 Users may wish to refer to the ABS Publication *A Guide to Interpreting Time Series – Monitoring 'Trends' – An Overview* (1348.0) for more detailed information on smoothing seasonally adjusted time series data.

RELATED PUBLICATIONS

6 Current publications produced by the ABS are listed in the *Catalogue of Publications and Products* (1101.0). The ABS also issues, on Tuesdays and Fridays, the *Release Advice* (1105.0) which lists publications to be released in the next few days. The *Catalogue* and *Release Advice* are available from any ABS office.

UNPUBLISHED STATISTICS

7 As well as the statistics included in this and related publications, the ABS may have other relevant unpublished data available. Inquiries should be made to Information Inquiries on (03) 6222 5800 or to any ABS office.

EFFECTS OF ROUNDING

8 Some figures have been rounded and discrepancies may occur between totals and sums of the component items.

SYMBOLS AND OTHER USAGES

n.a.	not available
n.y.a.	not yet available
..	not applicable
—	nil or rounded to zero
p	preliminary—figure or series subject to revision
r	figure or series revised since previous issue



For more information . . .

The ABS publishes a wide range of statistics and other information on Australia's economic and social conditions. Details of what is available in various publications and other products can be found in the ABS Catalogue of Publications and Products available from all ABS Offices.

ABS Products and Services

Many standard products are available from ABS bookshops located in each State and Territory. In addition to these products, information tailored to the needs of clients can be obtained on a wide range of media by contacting your nearest ABS Office. The ABS also provides a Subscription Service for standard products and some tailored information services.

National Dial-a-Statistic Line

0055 86 400

Steadycorn P/L: premium rate 25c/21.4 secs.

This number gives 24-hour access, 365 days a year, for a range of important economic statistics including the CPI.

Internet

<http://www.statistics.gov.au>

A wide range of ABS information is available via the Internet, with basic statistics available for each State, Territory and Australia. We also have Key National Indicators, ABS product release details and other information of general interest.

Sales and Inquiries

Keylink STAT.INFO/ABS
X.400 (C:Australia,PUB:Telememo,O:ABS,FN:STAT,SN:INFO)
Internet stat.info@abs.telememo.au

National Mail Order Service (06) 252 5249
Subscription Service 1800 02 0608

	Information Inquiries	Bookshop Sales
SYDNEY	(02) 9268 4611	(02) 9268 4620
MELBOURNE	(03) 9615 7755	(03) 9615 7755
BRISBANE	(07) 3222 6351	(07) 3222 6350
PERTH	(09) 360 5140	(09) 360 5307
ADELAIDE	(08) 8237 7100	(08) 8237 7582
CANBERRA	(06) 252 6627	(06) 207 0326
HOBART	(03) 6222 5800	(03) 6222 5800
DARWIN	(08) 8943 2111	(08) 8943 2111



Client Services, ABS, PO Box 10, Belconnen ACT 2616

Produced by the Australian Government Publishing Service
© Commonwealth of Australia 1997

Recommended retail price: \$18.00



2130360003972
ISSN 1034-1803